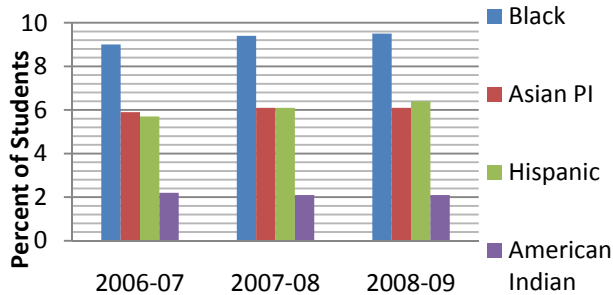




**CLAC Fact Sheets Series
EDUCATION/SUMMER 2009**

Latino Students in Public Schools

Minorities comprise slightly more than 14% of the total population in Minnesota, but the enrollment of students of color in public schools is even higher and on the rise: In the '08-'09 school year, 24.3% were non-white students, a full one percent increase since the last year, and a 15% increase since 1990. Although Latinos constitute about 4.7% of the total population, Latino PK-12 students represented 6.4% of the student body in 2009, up from 5.4% in 2006.¹



Source: Minnesota Department of Education Enrollment Data.

However, Latino students represent even larger percentages of the student body in certain rural districts, as shown in Table 1.

Table 1: School Districts With More Than 10% Latino Enrollment

District	2002-03	2006-07	2008-09
	%	%	%
LYND	25.5	35.0	39.8
ST. JAMES	28.2	38.1	38.9
WORTHINGTON	25.8	34.1	38.1
MADELIA	27.8	32.2	34.6
BUTTERFIELD	16.8	20.7	32.9
RICHFIELD	13.5	26.9	32.1

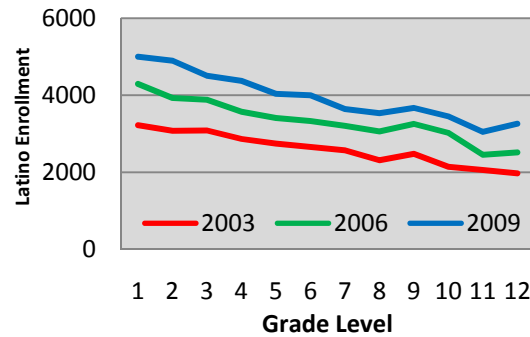
Source: Minnesota Department of Education

¹ Minnesota Department of Education 2008-2009 Enrollment Statistics

In Hennepin and Ramsey counties, where minority students comprise 44% and 53% percent of students respectively, Latinos represented 9.7% and 9.6% of the student body.

Although growth in Latino enrollment has been slowing since 2003, the Latino student body continues to grow at approximately 6% per year in Minnesota. Despite this growth, however, enrollment slips downward beginning in first grade. This trend can be seen both numerically and when comparing Latinos as a percentage of enrolled students, and has remained consistent in all years since 2003. As shown by Graph 2, enrollment numbers for Latinos drop substantially between first and twelfth grade, except in 2009.

Graph 2: Latino Enrollment by Grade



Source: CLAC with data from Minnesota Department of Education

Academic Performance: Achievement Disparities

Despite Minnesota's positive overall scores on standardized tests, performance is significantly worse when statistics are disaggregated by race. Data continues to show significant disparities in academic achievement and graduation rates between Latino students and their peers of different racial/ethnic backgrounds, especially white students.

Some results are positive: The percent proficient on the 2009 Reading MCA-II for 10th graders increased for every ethnic group, although the gap

between white and minority students continues to widen.

Table 2: Reading MCA-II: Percentage of Students Proficient

	% proficient 2007	% proficient 2009
White	69	81
Asian	48	59
Native Am.	36	50
Latino	34	47
Black	34	42
All students	62	74

Source: CLAC with data from MDE (2008)

The pattern is similar in the Mathematics MCA-II, with Latinos posting small gains in proficiency between 2008 and 2009, but remaining at a dismal 17% proficiency level.²

Although the number of non-white and Latino high school graduates is increasing, gaps in both drop out and graduation are substantial. As of 2007, the Latino dropout rate was the highest of any ethnic group at 19.5% - more than five times the white rate. Graduation rates for Latinos remain at only 41.3%.

Table 3: 2007 Graduation and Dropout Rates by race/ethnicity

	Drop out %	Graduation %
White	4.2	80.4
Asian	6	66
African American	13.3	41.3
American Indian	18.6	41.4
Latino	19.5	41.3

Source: CLAC with data from MDE

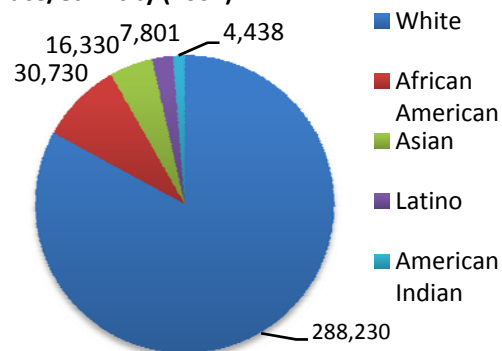
Post Secondary Education

For those Latinos who do graduate high school, continuing education is difficult. Although nearly eighty percent of Latino seniors in high school would like to attend college,³ only 56% took the ACT, a requirement for most four year institutions. Of those 56%, only 16% - a mere 260

students, - met the ACT scores marked as the minimum for college readiness.⁴

It is partially because of facts like these that enrollment patterns in post-secondary education vary significantly by race and ethnicity. In Minnesota, only 7,801 Latinos were enrolled any kind of higher education in 2007, representing 1.7% of total enrollment.⁵ As Graph 3 shows, higher education in Minnesota remains overwhelmingly white.

Graph 3: Postsecondary Enrollment by race/ethnicity (2007)



Source: CLAC with data from MOHE (2008)

Unfortunately, some of the same achievement gaps seen in secondary education are persistent on higher levels. Only 55% of Latinos in four year institutions graduated or transferred out of within six years of matriculation. In two-year institutions, 64% of Latinos fail to complete a degree or transfer within two years, and only 18% receive certificates. In 2007, only 900 degrees and certificates were awarded to Latinos in Minnesota.⁶

Prepared by Leif Johnson
Questions and Comments: 651-284-3034.

² Minnesota Department of Education 2008-2009 Enrollment Statistics

³ Minnesota Minority Education Partnership. *2009 State of Students of Color and American Indian Student*. 2009.

⁴ ACT High School Profile Report: *The Graduating Class of 2008, Minnesota*.

⁵ Minnesota Office of Higher Education. (2009). *Minnesota Measures. 2009 Report on Higher Education Performance*. St Paul: Minnesota Office of Higher Education

⁶ Ibid.